

MCS Hot Runner Controller

The new benchmark in user-friendliness

High-quality construction ▪ Comprehensive functionality ▪ New benchmark in user-friendliness

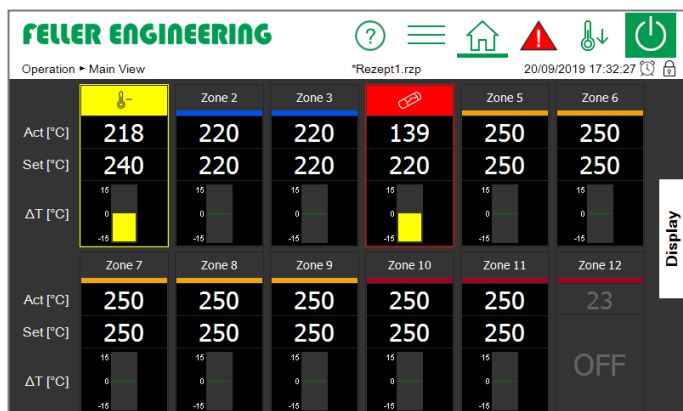


High-quality construction

- Compact design
- External heat sinks and fuses
- 7-inch tiltable touch display
- 3-sided LED band for indication of operating status
- USB interface for updating, data backup, etc.

Comprehensive functionality

- All important hot runner functions
- Numerous monitoring functions
- Superior control algorithms
- Troubleshooting guide
- Analysis tools



New benchmark in user-friendliness

Unique operating functions support the user during input so that even untrained personnel can operate the controller safely.

This enables

- ✓ Operation without manual
- ✓ Operation without training
- ✓ Operation without previous knowledge

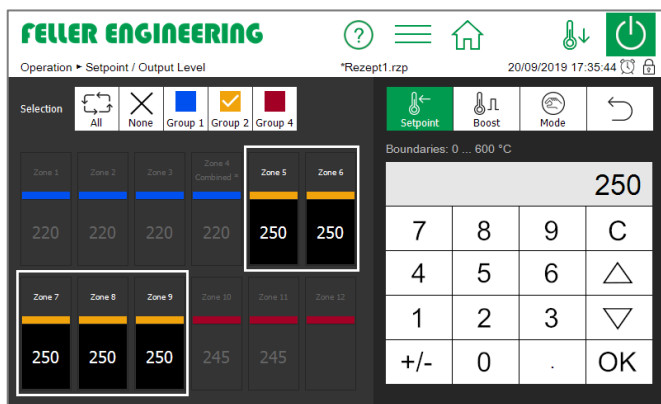
Comprehensive functionality

Reliable ▪ Robust ▪ Service-friendly

- Superior control algorithms thanks to 40 years of experience
- Controlled heating in case of sensor break
- Sequential heating or cooling
- Group definition
- Gentle heating
- Recipe management
- Mould check
- Remote maintenance
- Industry 4.0 thanks to OPC UA
- Control inputs and outputs
- Short-circuit protection in start-up mode
- Communication interfaces such as RS485, Ethernet
- Multilingual

The No. 1 in terms of ease-of-use

Operation without manual ▪ No need for training ▪ Without previous knowledge

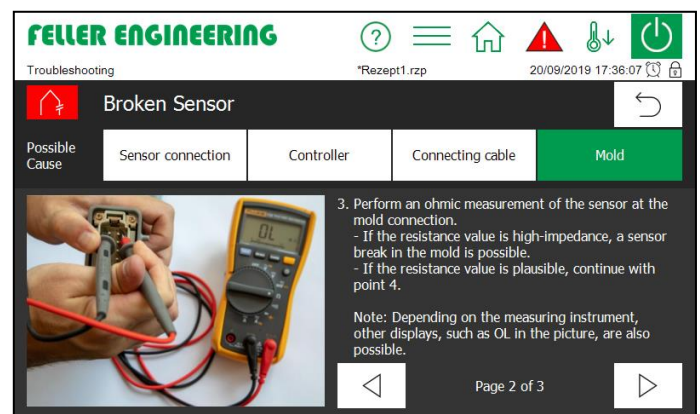


- Self-explanatory user interface
- Smart Navigation
- User guidance during operation
- Quick start
- Integrated Help for all settings and functions
- Chart recorder
- Individually adjustable zone display
- Step-by-step troubleshooting
- Index
- Service file
- Event list

Premium Diagnostics

Highest process stability ▪ Shortest downtimes ▪ Extensive protection

- **Troubleshooting guide**
With the step-by-step troubleshooting guide, the user can rectify errors himself, thus reducing downtimes to a minimum.
- **Extensive monitoring functions** guarantee the protection of the controller, hot runner and mould.
 - Temperature limit values
 - Uncontrolled current flow to tool
 - Fuse failure
 - Overload at activating outputs
 - Humidity with gentle drying out
 - Heating current
 - Output level
 - and more



Example of the troubleshooting guide